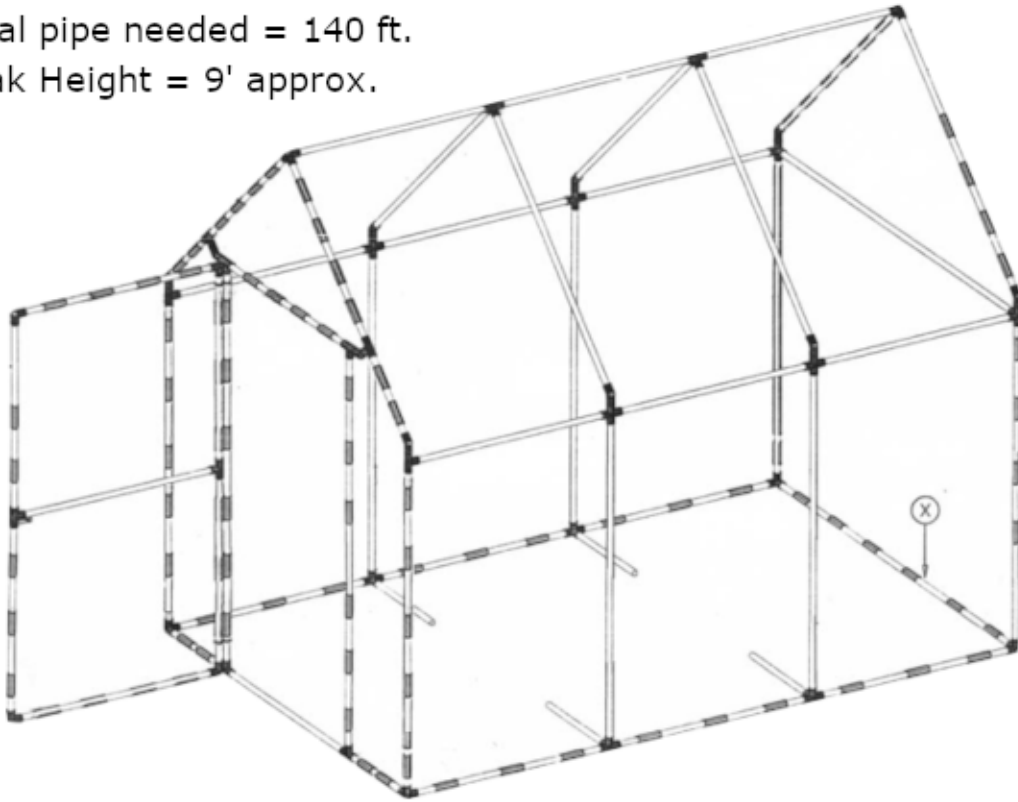


# Pitched Roof Greenhouse Parts List - 6' x 9' (approx.)

Total pipe needed = 140 ft.

Peak Height = 9' approx.



Prt	Qty	Description	Prt	Qty	Description
A	20	36 inch tube (1 inch sch. 40 PVC)	B	2	72 inch tube (1 inch sch. 40 PVC)
C	4	16-1/2 inch tube (1 inch sch. 40 PVC)	D	6	3-way L - 1 inch <a href="#">(Circo item #33)</a>
E	8	4-way LT - 1 inch <a href="#">(Circo item #43)</a>	F	10	Tee - 1 inch PVC fitting <a href="#">(Circo #123)</a>
G	8	58 inch tube (1 inch sch. 40 PVC)	H	1	71-1/4 inch tube (1 inch sch. 40 PVC)
I	2	Door Hinge - <a href="#">(Circo Item #253)</a>	J	1	Door latch - <a href="#">(Circo Item #263)</a>
K	2	34-1/4 inch tube (1 inch sch. 40 PVC)	L	2	32 inch tube (1 inch sch. 40 PVC)
M	6	50 inch tube (1 inch sch. 40 PVC)	O	4	L/90 - 1 inch PVC fitting <a href="#">(Circo #113)</a>
P		Connector 1 lft, 1 rgt. - (Assembly Required)	Q		Connector 1 lft, 1 rgt. (Assembly Required)
R		Connector. - (Assembly Required)	S		Connector 1 lft, 1 rgt. (Assembly Required)
T	1	Top/sides Cover (see bottom page)	U	1	Back Cover (see bottom page)
V	1	Front Cover (see bottom page)	W	1	Door Cover (see bottom page)
X	200	Snap Clamps 4" X 1" <a href="#">(Circo Item #13)</a>			
Z	4	18 inch tube (1 inch sch. 40 PVC)	AA	12	1-3/4 inch tube (1 inch sch. 40 PVC)
BB	10	45 degree - 1 inch PVC fitting <a href="#">(Circo #143)</a>	CC	4	X /cross - 1 inch PVC fitting

## I. Aluminum Door Hinge #253

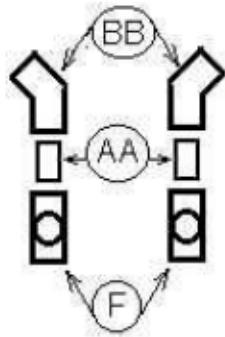


## J. Pre-built door latch assembly #263

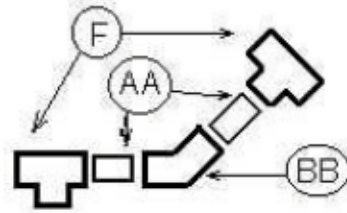


Special Configurations for Pitched Roof Angles (see next page)

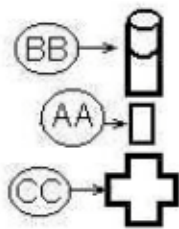
P. Connector - 1 lft, 1 rgt



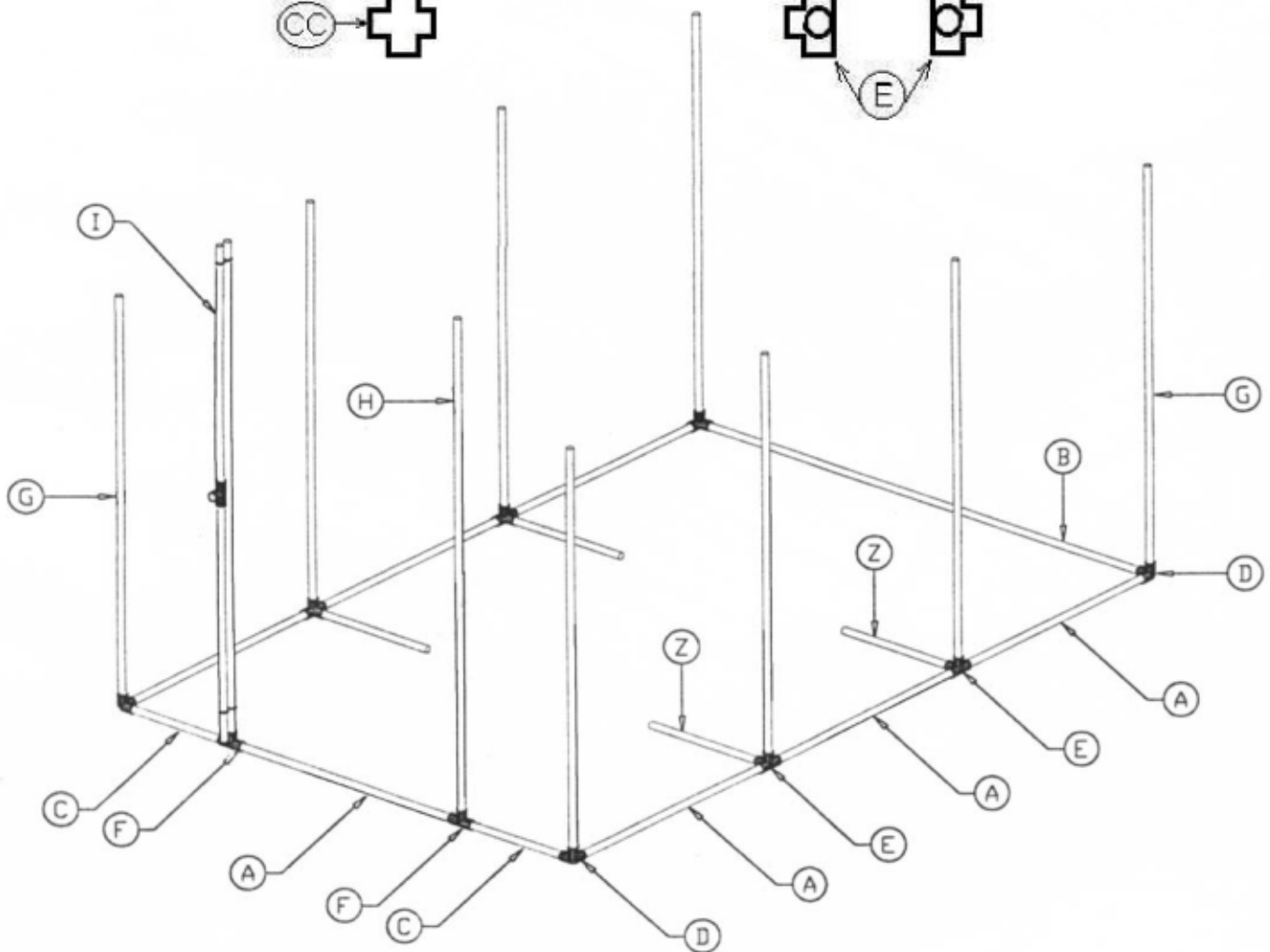
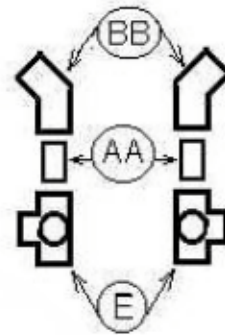
Q. Connector - 1 lft, 1 rgt



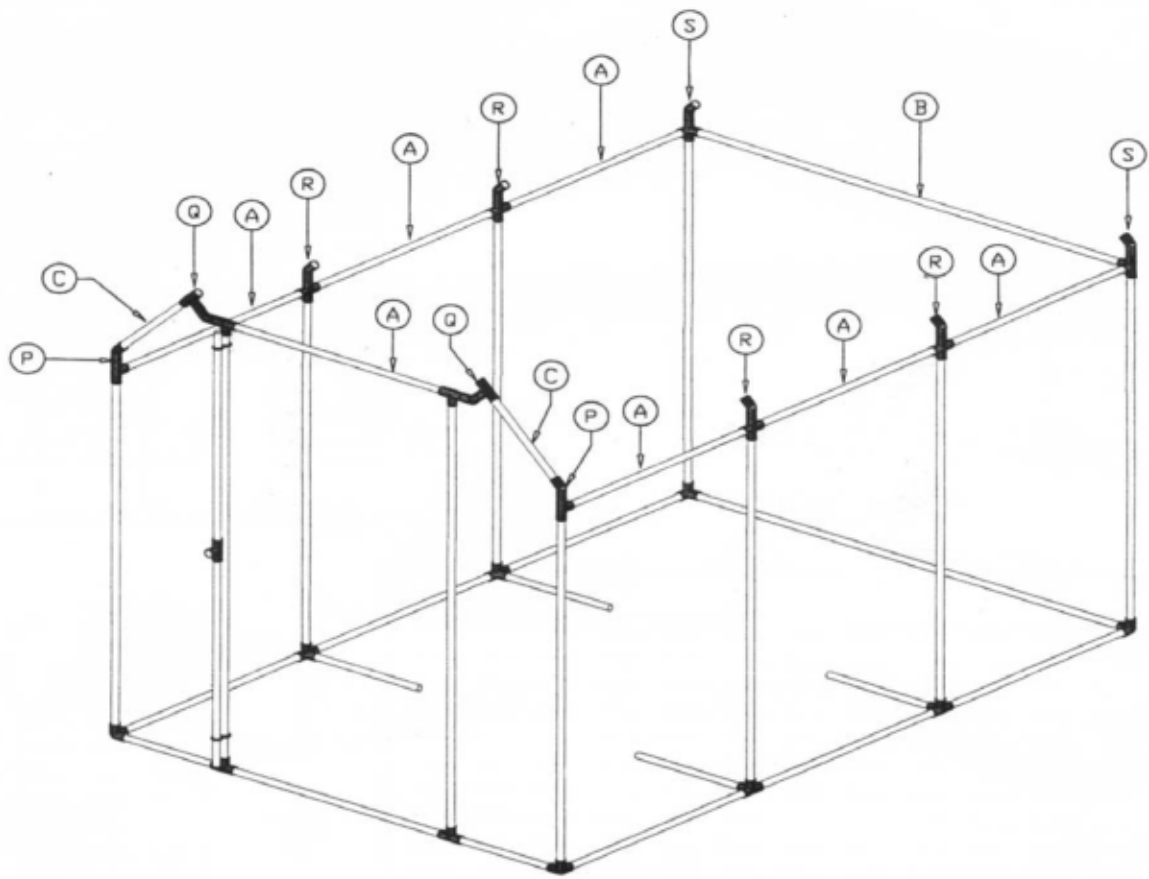
R. Connector-4



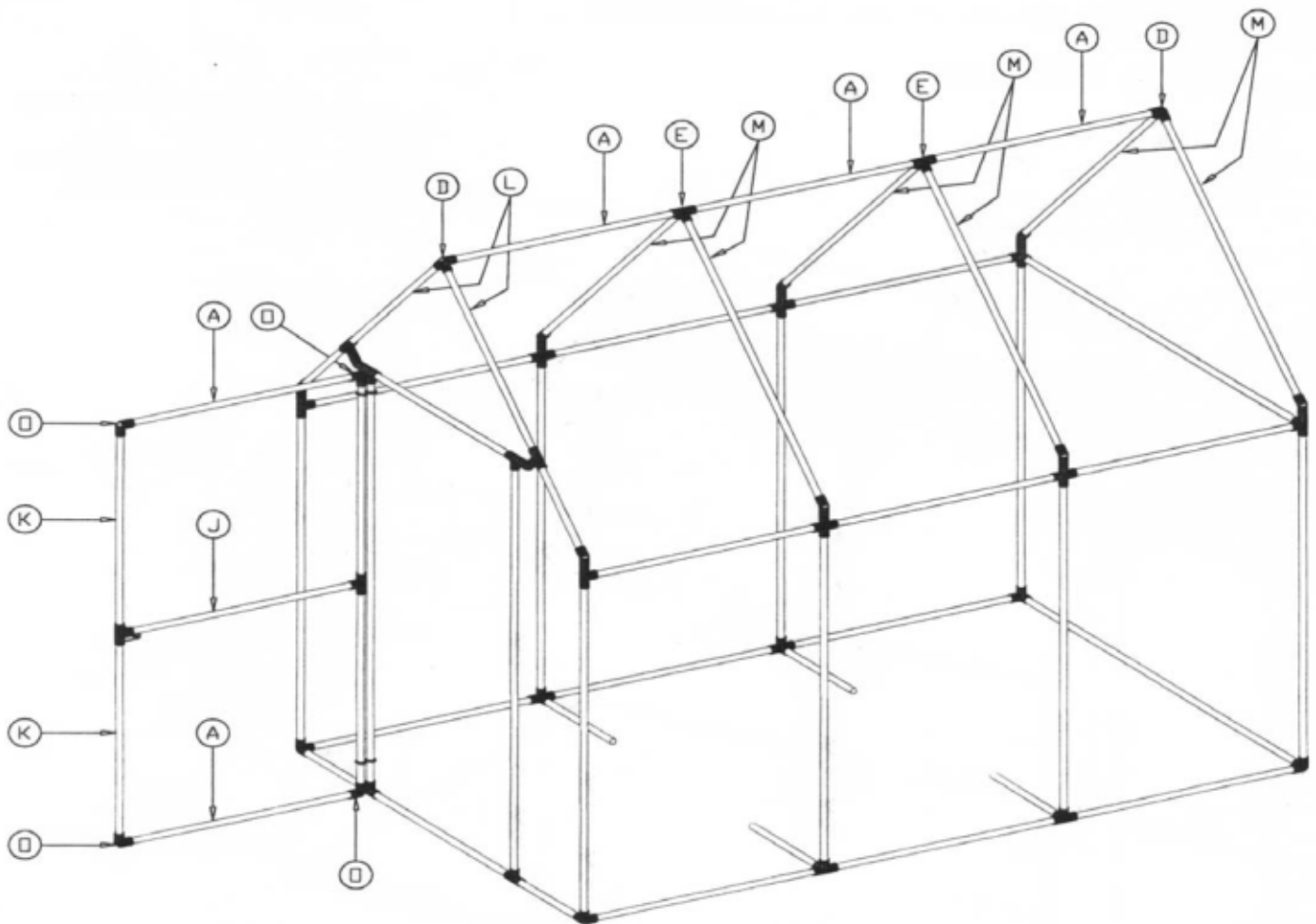
S. Connector - 1 lft, 1 rgt



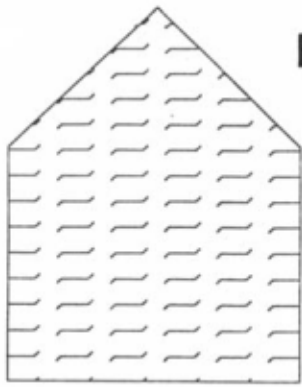
Base Assembly - First



**Walls Assembly - Second**

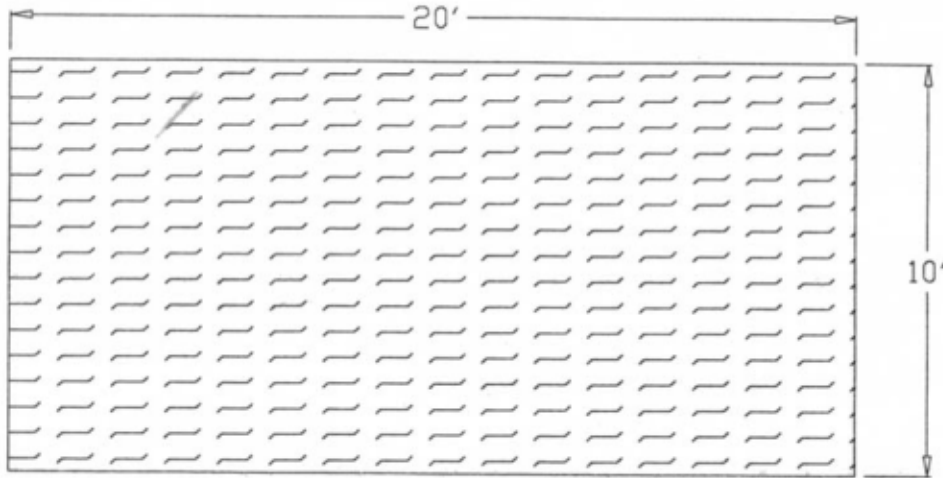
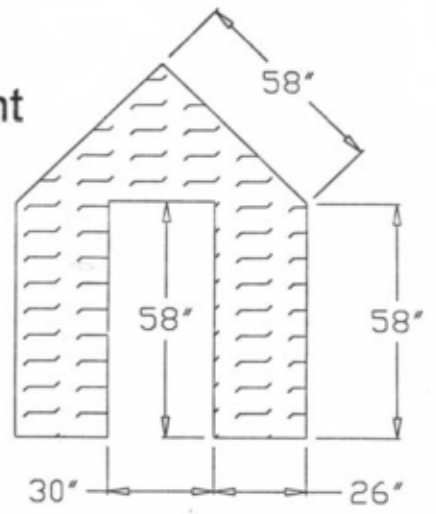


**Roof Assembly - Third**

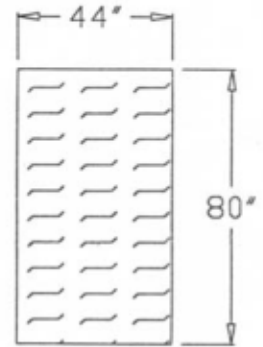


Back

Front

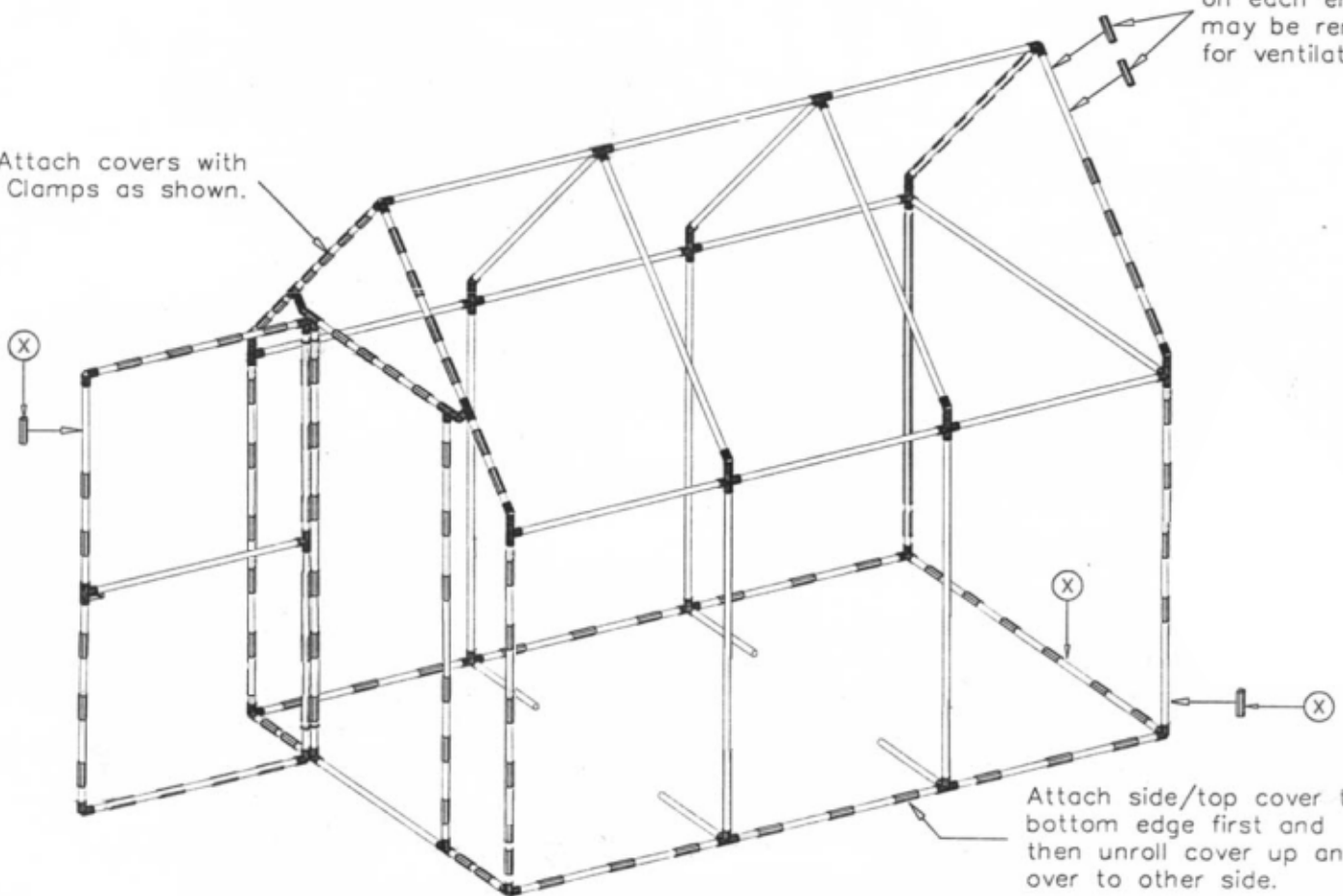


Top / Sides



Door

Attach covers with Snap Clamps as shown.



Top Four clamps on each end may be removed for ventilation.

Attach side/top cover to bottom edge first and then unroll cover up and over to other side.