

Boat Cover Support Frame

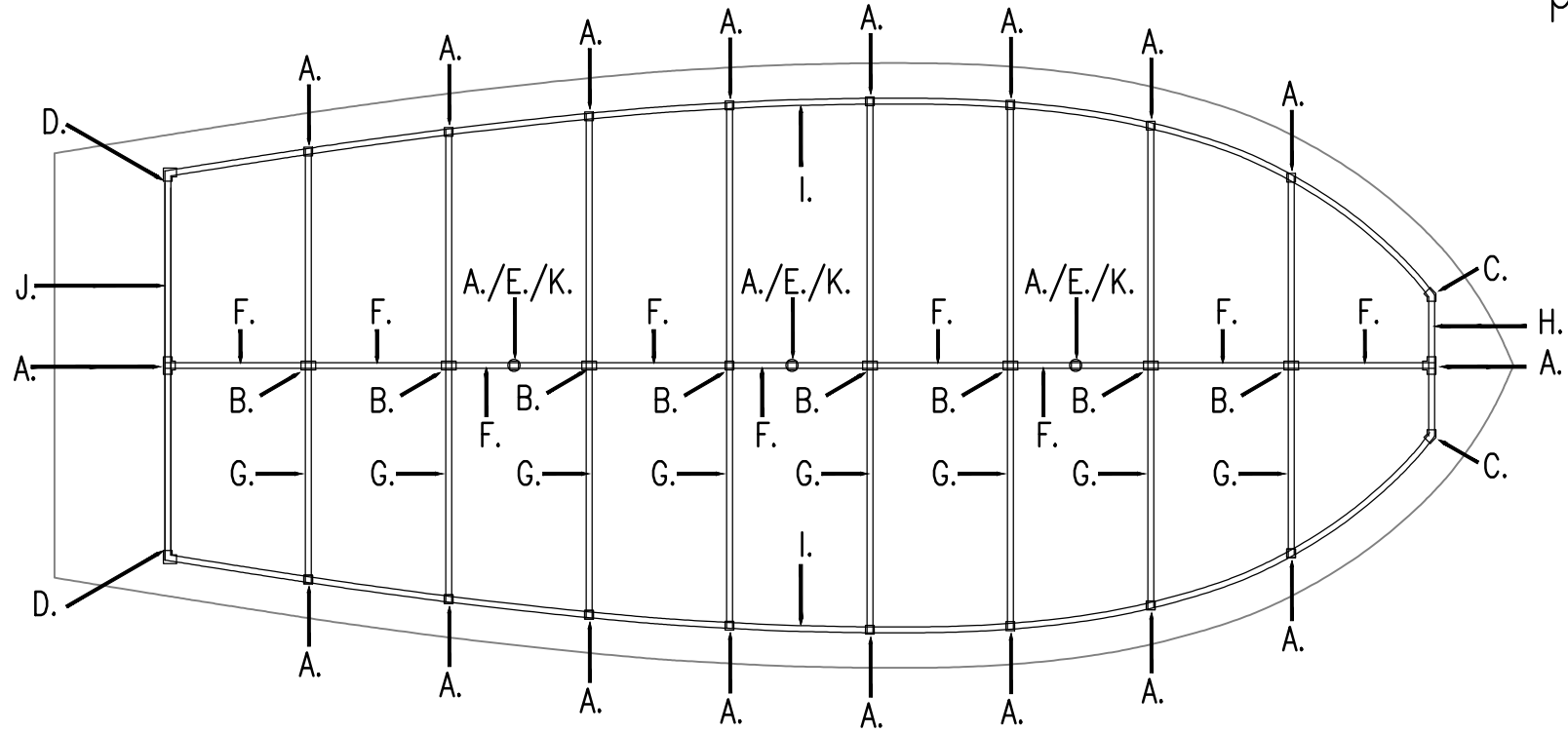
Materials List:

All pipe is Sch 40 PVC. Pipe; diameter to be determined as needed for strength, depending on boat size. Quantities and actual lengths of pipe are to be determined to fit the boat hull, depending on boat size.

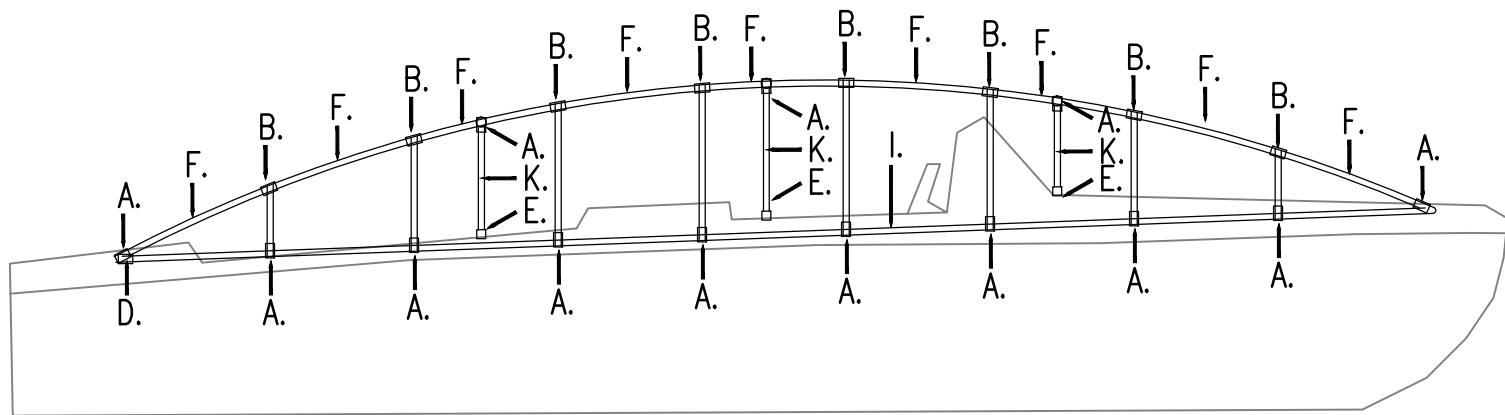
Item	Description	Item	Description
A.	Slip Tees	G.	Pipe (Ribs)
B.	Cross Tees	H.	Pipe (Bow)
C.	45 Degree fitting	I.	Pipe (Port / Starboard)
D.	90 Degree fitting	J.	Pipe (Stern)
E.	Cap	K.	Pipe (vertical support)
F.	Pipe (Ridge) – approx. 24” lengths.		

Instructions:

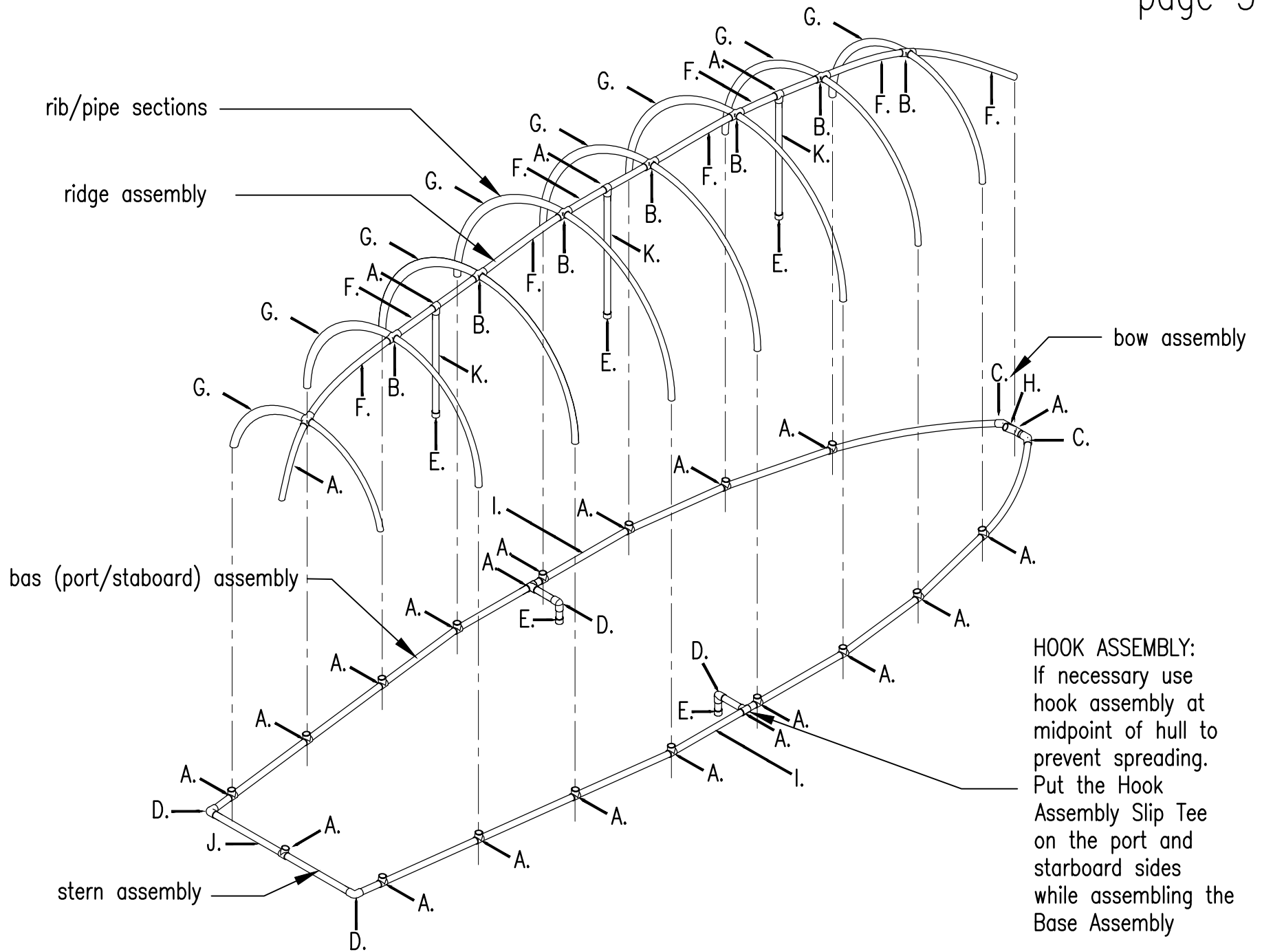
1. Construct Ridge Assembly by gluing 24” (approx.) sections of PVC pipe joined by cross Tees. Ridge forms an arc shape from bow to stern. Overall length of the ridge shall be determined by boat size and the desired height of the arc.
2. Make the Base Assembly by laying a long section of PVC pipe on each top perimeter edge of the hull where the frame supports rest.
3. Slip the Slip Tees, to be attached on to the perimeter pipe lengths corresponding to the number of bow ribs onto the Base Assembly.
4. Slip one extra Slip Tee on each port and starboard side as part of the Hook Assembly to keep the base from spreading. See Hook Assembly illustration on pages 3 & 4.
5. Glue the end pieces of the perimeter arcs to the L’s or 45 degree fittings so the perimeter stays to it’s proper shape. Secure the frame where possible to tie down hooks with zip ties and to the Hook Assembly in middle. See Hook Assembly illustration on pages 3 & 4.
6. Glue the vertical middle supports to the Ridge assembly and add the caps that set on the floor of the boat.
7. Insert the Ridge assembly into the Slip Tees at the bow and stern of the Base assembly.
8. Slip the bow ribs through the Slip crosses of the ridge assembly and into the Slip Tees on Each side of the Base assembly after they are cut to the exact length to fit the arc of the ridge

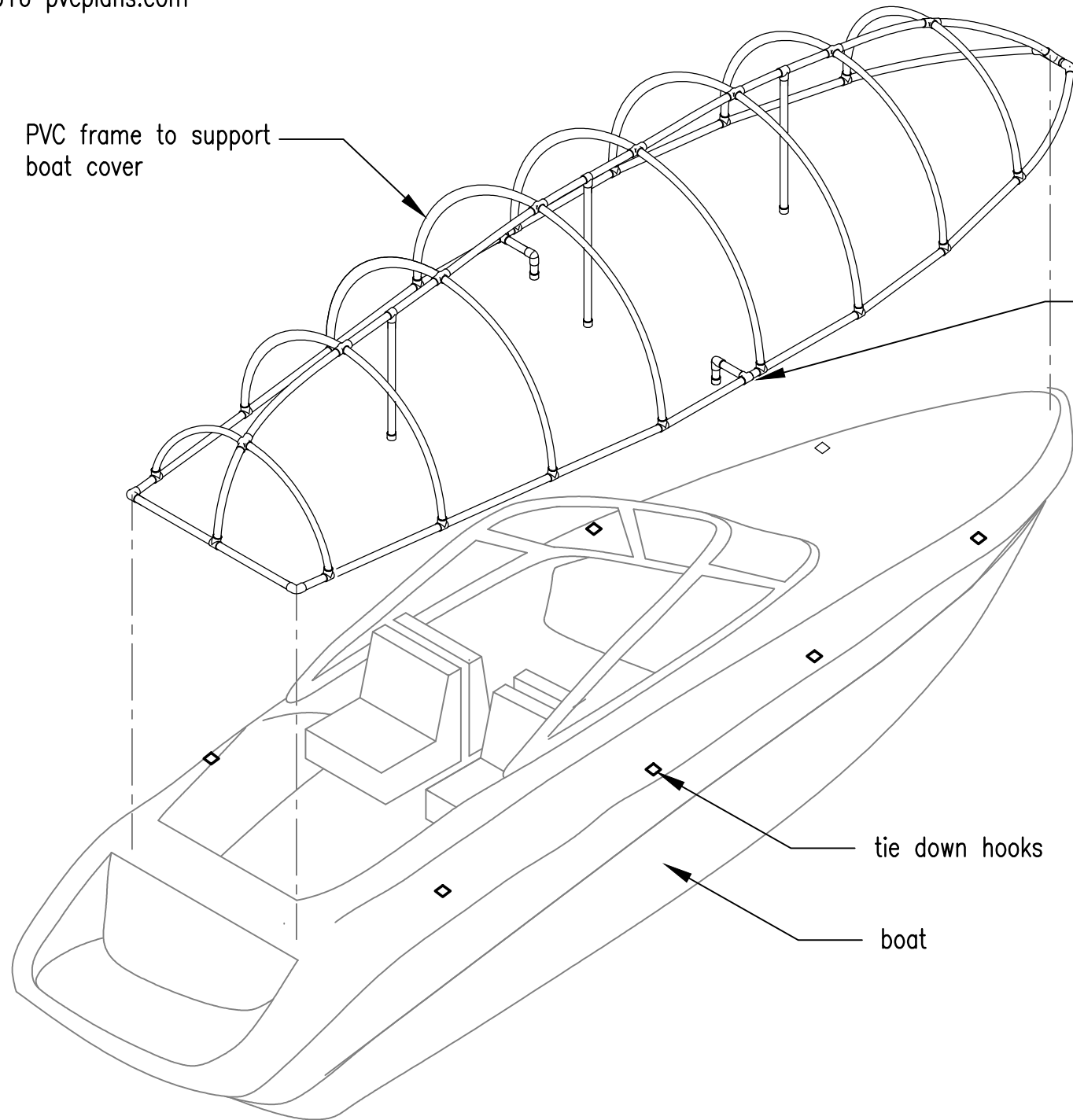


TOP VIEW DIAGRAM



SIDE VIEW DIAGRAM





HOOK ASSEMBLY:
If necessary use hook assembly at midpoint of hull to prevent spreading. Put the Hook Assembly Slip Tee on the port and starboard sides while assembling the Base Assembly. See page 3 for additional information